

Michigan Local Food Purchase Assistance Program Impact

The Michigan Department of Education (MDE) coordinates the USDA Local Food Purchase Assistance (LFPA) program from October 2022 through December 2026 to maintain and improve the resiliency in the food and farm supply chain. The program demonstrates that investments in local supply chains can provide beneficial impacts for Michigan farmers and communities.

83
Michigan counties
participated

\$21.6M
Awarded to purchase
locally grown food in
Michigan

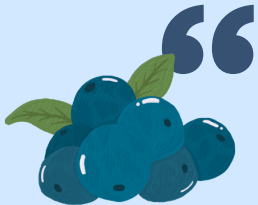
7
LFPA
distribution
partners

Who benefited from Michigan LFPA?

Michigan
farms of all
sizes

Michigan
communities

Michigan food
distribution
partners



“We received the fresh produce that came from our local farmers. We can't thank you enough for helping to fill our plates with such delicious foods.”

– Resident who received produce through the program



“In one year, we completed 27 distributions for roughly 179,178 pounds of fresh produce delivered to the doors of homebound seniors, children, and at-risk families as well as on public transportation systems.”

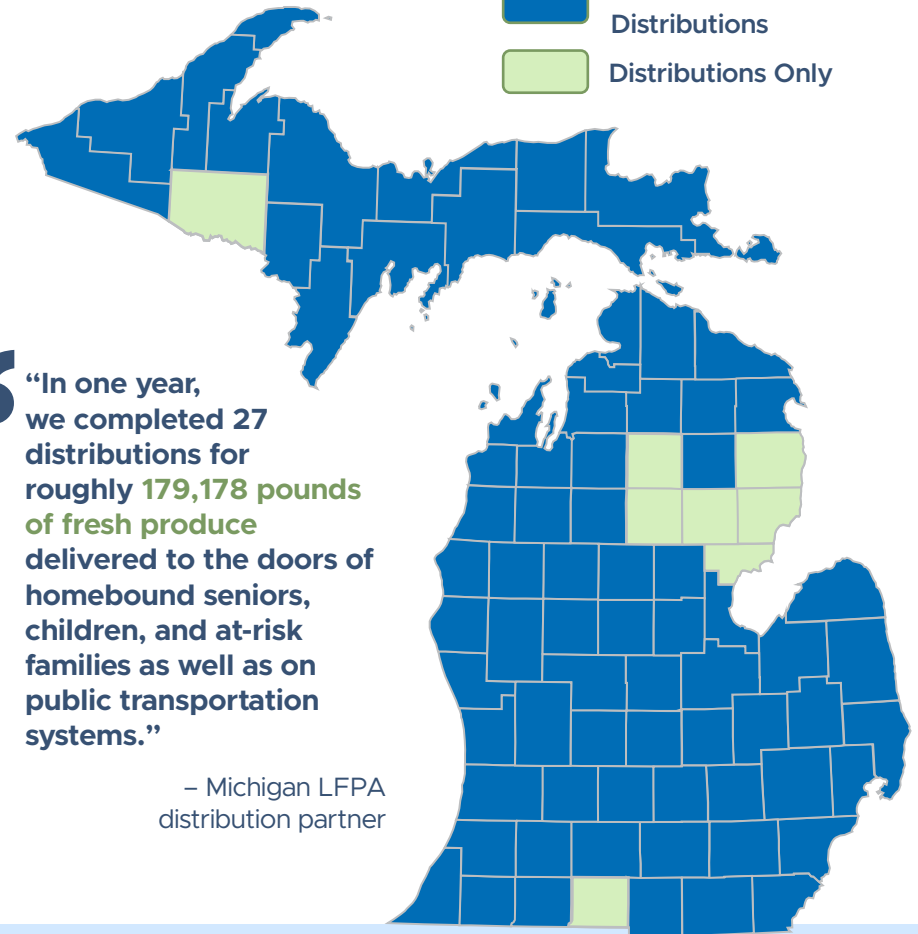
– Michigan LFPA distribution partner

Targeted investments in local food systems can produce measurable impacts for both local farmers and communities.

Scan the QR code to see stories from the field



Both Purchases & Distributions
Distributions Only



LFPA proudly supported by USDA. LFPA concludes December 2026. All information in this document represents data during active LFPA programming.

Thanks to the seven LFPA food distribution partners: Eastern Market, Flint Fresh, Food Bank Council of Michigan, Kalamazoo Valley Community College/ValleyHUB, Mid Michigan Community Action, Thumb Food Policy Council, and West Michigan Food Processing Association and evaluation partner, Michigan State University Center for Regional Food Systems.

540+

Local farms supplied food products for the program

Surveyed farmers reported:

87%↑

Increase in food produced

96%↑

Increase in local food distribution opportunities



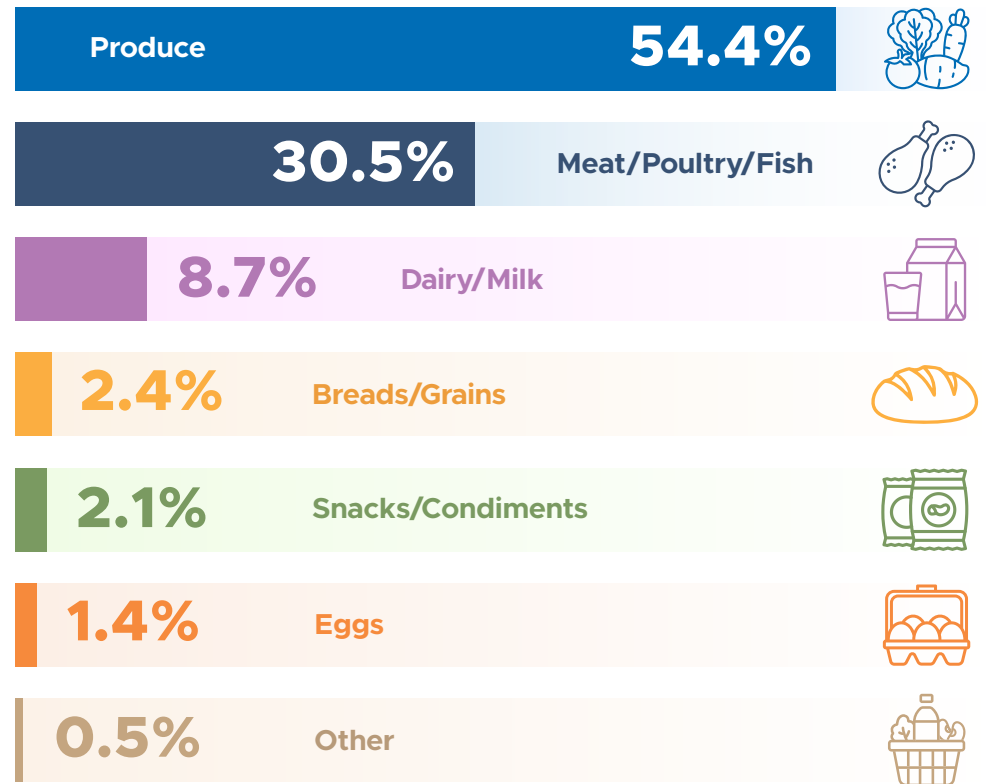
“The Local Food Purchase Assistance program (LFPA) has made an extraordinary impact across Michigan, enhancing our local food distribution network and supporting local producers to provide nutritious food to communities.”

– Tom Priest, Michigan Department of Education

Farmer benefits from LFPA:

- 1 Expanded market opportunities
- 2 Enhanced relationships with agencies and other farmers
- 3 Improved operations
- 4 Increased statewide distribution of healthy, nutritious foods, with a focus on Michigan-grown

Most commonly purchased foods in the Michigan LFPA program:



“Being able to sell our eggs and then have them distributed is excellent because our eggs can help those in need in our community! These eggs would have been donated, and we would have lost a lot of money, but because of this program, we were able to recoup our costs and help local families in need!”

– Michigan farmer supplying to the LFPA



LFPA proudly supported by USDA. LFPA concludes December 2026. All information in this document represents data during active LFPA programming.

Thanks to the seven LFPA food distribution partners: Eastern Market, Flint Fresh, Food Bank Council of Michigan, Kalamazoo Valley Community College/ValleyHUB, Mid Michigan Community Action, Thumb Food Policy Council, and West Michigan Food Processing Association and evaluation partner, Michigan State University Center for Regional Food Systems.